

MORTALITY

A fact sheet on mortality in the London Borough of Hounslow.

1 Mortality Rates

Figure 1: Trend in all age all cause mortality: 2002-2004 to 2008-2010. Directly standardised rates per 100,000 population, 95% C.I. shown by the width of the shaded area about the line. Data: Office for National Statistics Public Health Mortality Files; Population: Office for National Statistics Super Output Area mid-year population estimates for England and Wales

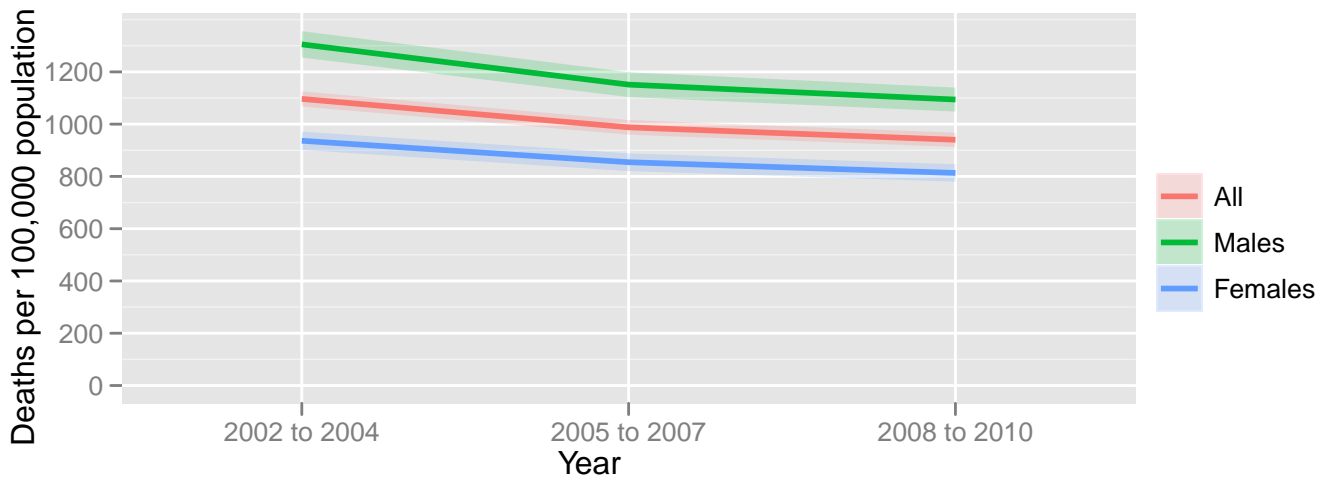


Figure 2: Trend in infant mortality: 2002-2004 to 2008-2010. This is the number of deaths per 1000 live births where the child was less than 1 year old, 95% C.I. shown by the width of the shaded area about the line. Data: Office for National Statistics Public Health Mortality and Birth Files

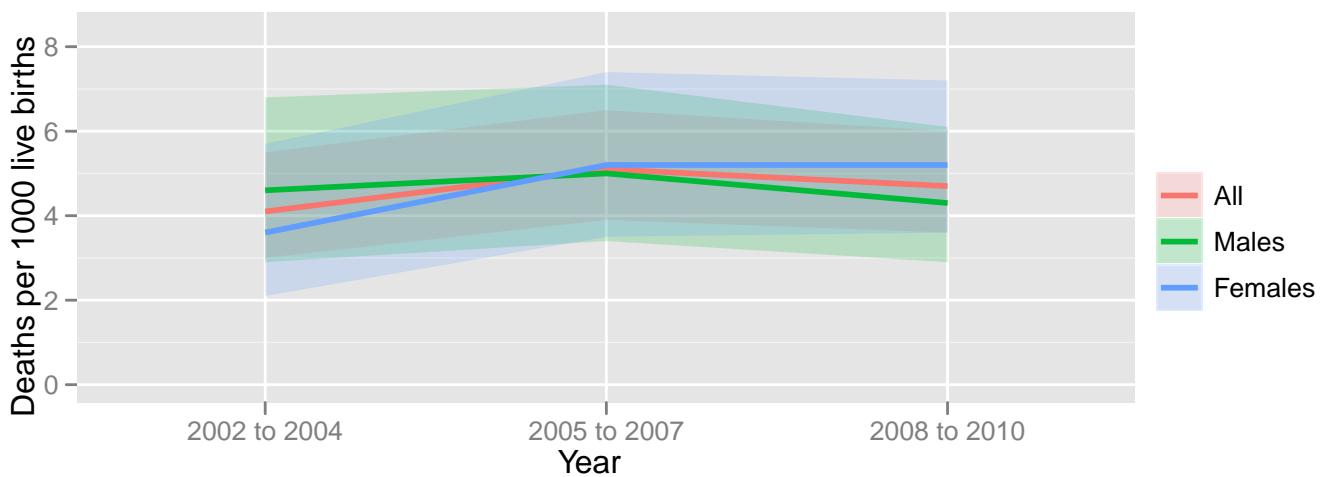


Figure 3: Trend in Directly Standardised Mortality Rate - Children aged 0 to 5: 2002-2004 to 2008-2010. Directly standardised rates per 100,000 population, 95% C.I. shown by the width of the shaded area about the line. Data: Office for National Statistics Public Health Mortality Files; Population: Office for National Statistics Super Output Area mid-year population estimates for England and Wales

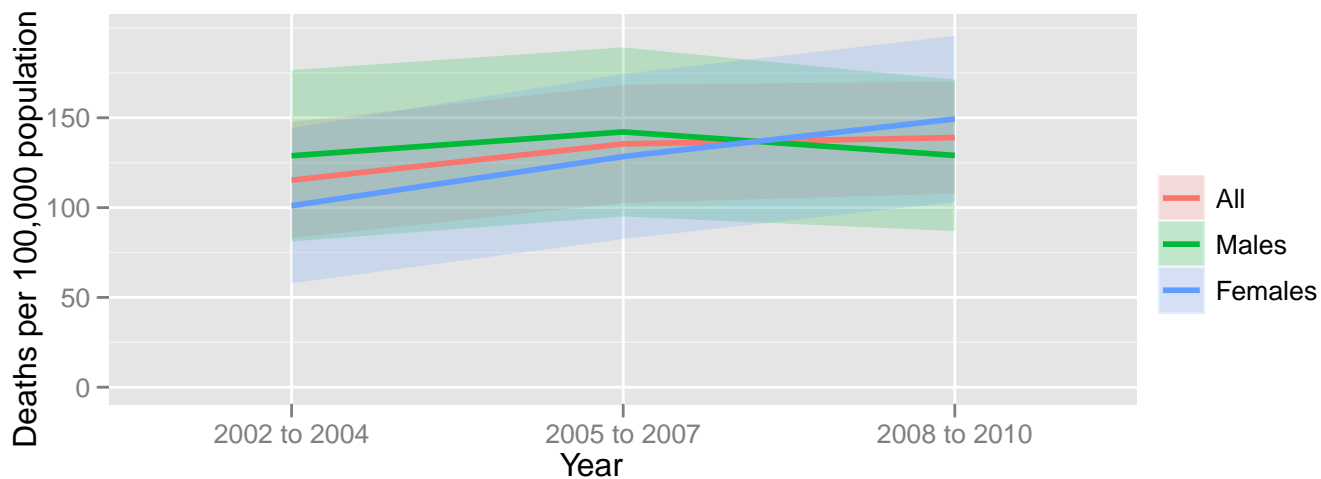


Figure 4: Trend in Directly Standardised Mortality Rate for under 75 year olds: 2002-2004 to 2008-2010. Directly standardised rates per 100,000 population, 95% C.I. shown by the width of the shaded area about the line. Data: Office for National Statistics Public Health Mortality Files; Population: Office for National Statistics Super Output Area mid-year population estimates for England and Wales

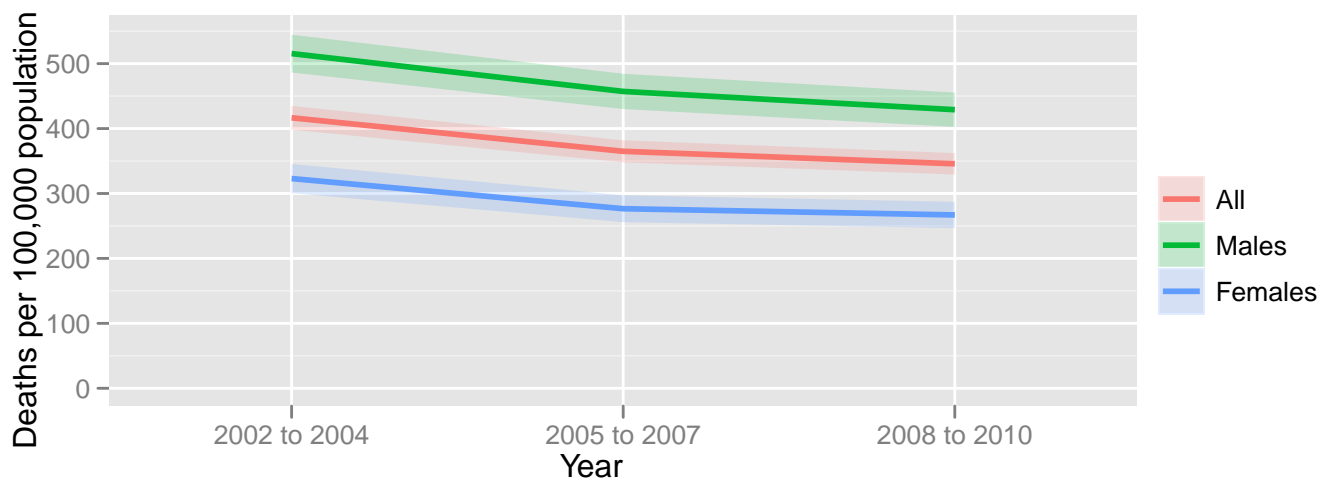


Figure 5: Years of Life Lost due to premature mortality: Rate per 10,000 population. Data: Office for National Statistics Public Health Mortality Files; Population: Office for National Statistics Super Output Area mid-year population estimates for England and Wales

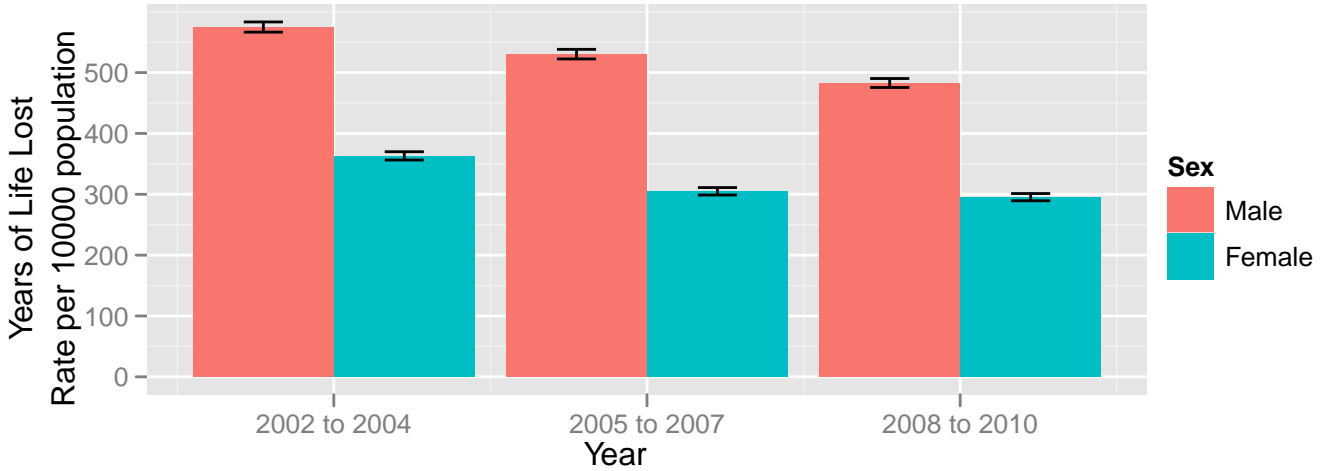


Figure 6: Trend in mortality rates for specific conditions: 2002-2004 to 2008-2010. a) Coronary Heart Disease, b)Stroke, c)Chronic Obstructive Pulmonary Disease, d)Diabetes Mellitus. Directly standardised rates per 100,000 population, 95% C.I. shown by the width of the shaded area about the line. Data: Office for National Statistics Public Health Mortality Files; Population: Office for National Statistics Super Output Area mid-year population estimates for England and Wales

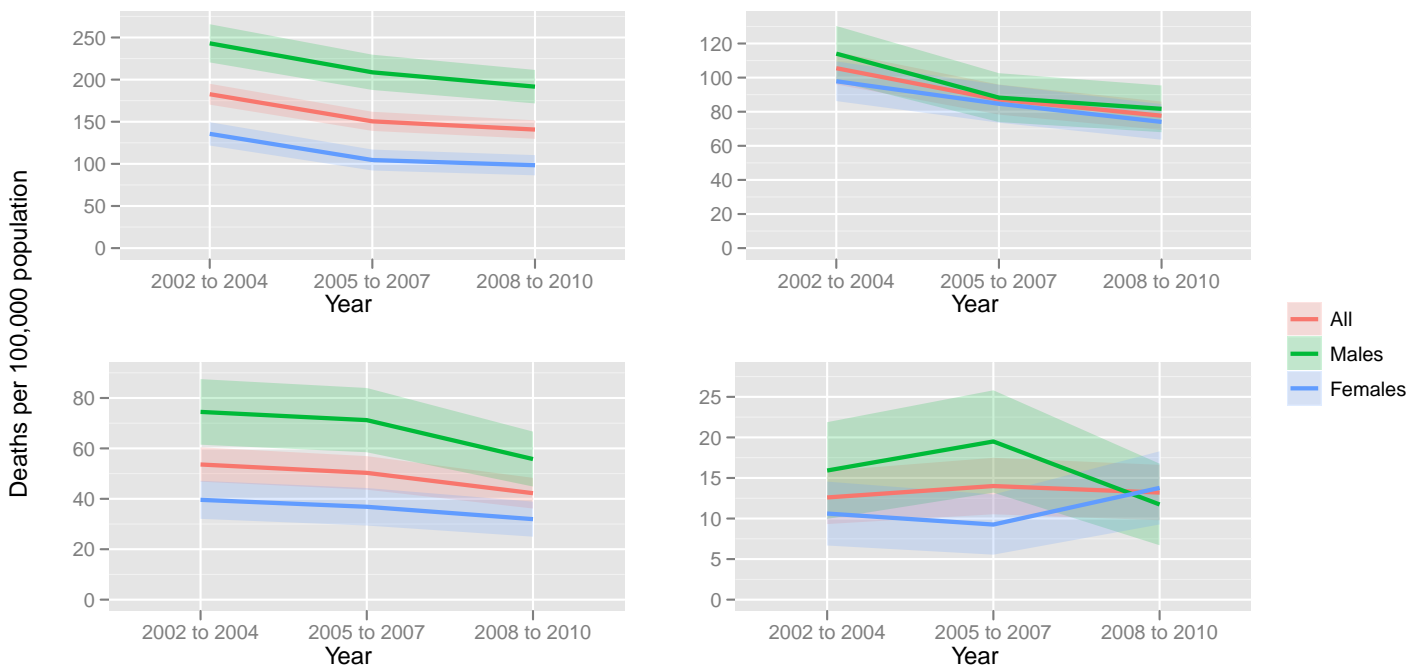


Table 1: Health Acorn Characteristics of population types significantly over represented in the population prematurely dying

Health Acorn Type	Characteristics	% of type died	% of type in Hounslow
1.4 Post industrial pensioners with long term illness	Older couples and pensioners - average smokers. Over one in ten are likely to have angina and over one in twenty to have had a heart attack.	2.8	1.1
1.5 Deprived neighbourhoods with poor diet, smokers	Poorer neighbourhoods with single parents and some elderly people live in social housing. Occupations tend to be lower status & unemployment above average. The proportion of people who are overweight is well above average, as is the level of smokers.	1.5	0.5
1.8 Disadvantaged neighbourhoods with poor diet & severe health issues	Illness appropriate to an elderly population in areas with an average age profile. Asthma, depression, angina and diabetes occur more frequently than average	5.3	3.1
2.3 Urban estates with sedentary lifestyle	Predominantly council estates of families with children-high numbers of smokers and many are overweight. Despite relatively few older people there are higher than average levels of high cholesterol and heart attacks	1.6	3.3
3.1 Less affluent neighbourhoods, high fast food, sedentary lifestyles	Mixed neighbourhoods, slightly older than average. Occupations tend to be manual or technical in nature. Levels of smokers, the overweight, heart disease, and those with high cholesterol or blood pressure are all a little above average	5.8	4.1
3.5 Low income families with some smokers	These are younger areas with a mixture of families and single parents. There is some unemployment and a mixture of lower managerial and routine jobs. There are more smokers than average and a little more people with weight problems.	8.7	2.5

Figure 7: Trend in mortality rates for specific cancers: 2002-2004 to 2008-2010. a) Breast, b) Cervical, c) Colorectal, d) Prostate. Directly standardised rates per 100,000 population, 95% C.I. shown by the width of the shaded area about the line. Data: Office for National Statistics Public Health Mortality Files; Population: Office for National Statistics Super Output Area mid-year population estimates for England and Wales

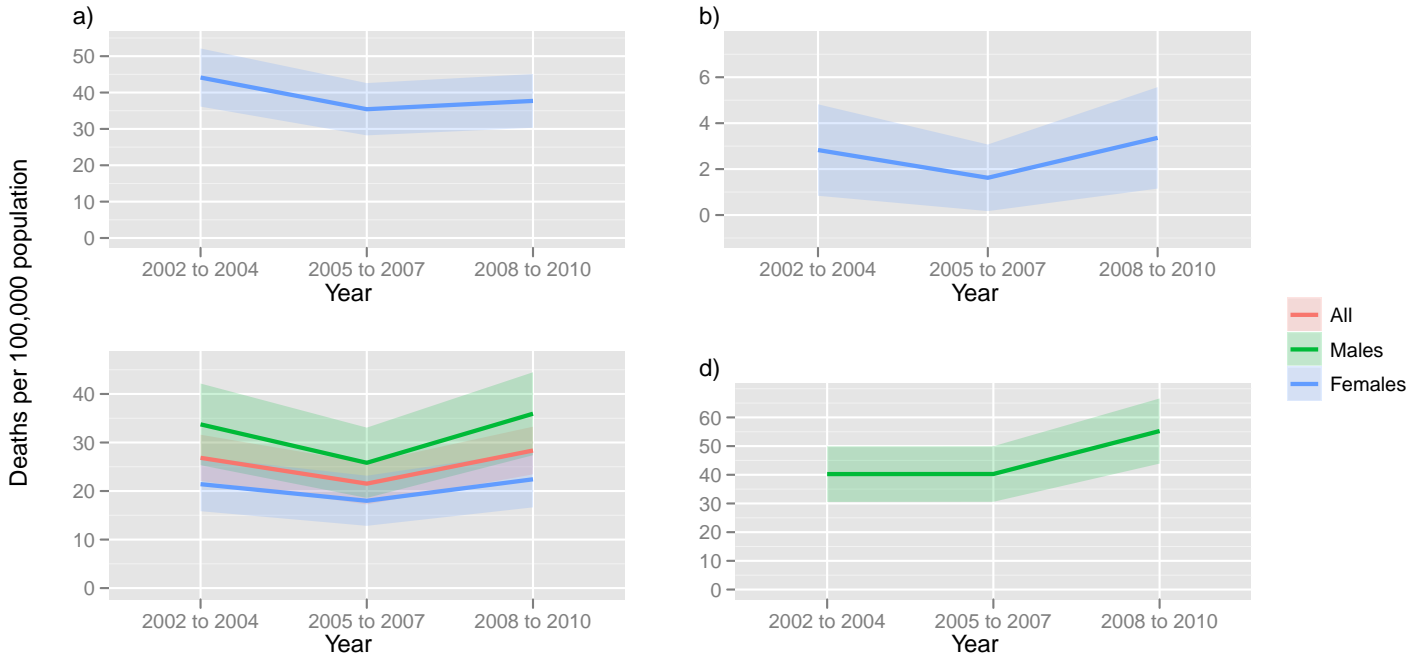


Figure 8: Trend in mortality rate for specific causes: 2002-2004 to 2008-2010. a) Suicide and Indeterminant Injury, b) Road Traffic Accidents. Directly standardised rates per 100,000 population, 95% C.I. shown by the width of the shaded area about the line. Data: Office for National Statistics Public Health Mortality Files; Population: Office for National Statistics Super Output Area mid-year population estimates for England and Wales



Figure 9: Trend in Excess Winter Mortality Index for Hounslow, London and England 2007/08 to 2009/10. The index is calculated as the number of excess winter deaths divided by the average non-winter deaths, expressed as a percentage. The data for 2009/10 is provisional and the number of deaths have been rounded to the nearest 100, compared to the nearest 10 deaths for the final data used in 2007/08 and 2008/09 in line with Office for National Statistics recommendations. Data: Office for National Statistics Public Health Mortality Files and Office for National Statistics Excess winter mortality in England and Wales, 2009/10 reference tables.

