

# CORONARY HEART DISEASE

A fact sheet on Coronary Heart Disease in the London Borough of Hounslow.

## 1 Primary care data

Figure 1: Guide to interpreting spine plots

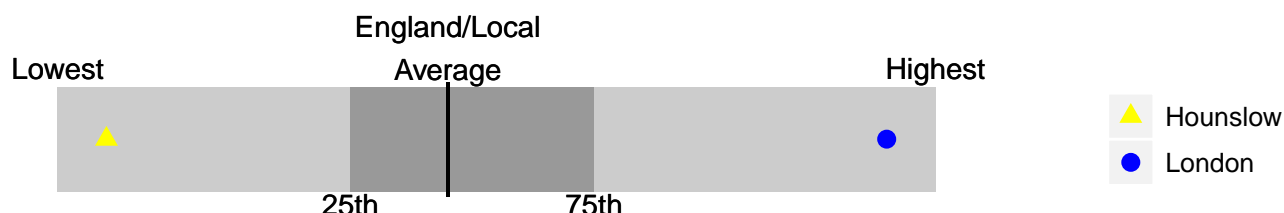


Table 1: Spine plot of the prevalence of Coronary Heart Disease and achievement against key Quality and Outcomes Framework indicators. Data: QOF returns 2009/10. Expected numbers of individuals who have Coronary Heart Disease were derived from Association of Public Health Observatories (APHO) Modelled estimates of prevalence of disease by PCT

Domain	Hounslow	London	England Lowest	England Average	England Highest
Prevalence (% of population)	2.5	2.2	1.4	3.4	5.2
Indirectly Standardised Rate per 10,000	254.8	234.3	146.6	269.7	383.8
Number of newly diagnosed Angina patients per 1000 population	290.8	307.0	161.0	481.4	810.8
CHD 2 - Newly diagnosed angina patients referred onto specialist assessment (%)	93.4	94.6	87.9	94.6	97.6
CHD 5 - Blood pressure taken (%)	96.7	97.2	95.6	97.6	98.7
CHD 6 - Blood pressure is ≤ 150/90 (%)	89.6	89.3	86.9	89.7	92.7
CHD 7 - cholesterol measured (%)	92.4	92.3	89.3	93.5	95.9
CHD 8 - cholesterol measured at ≤ 5mmol/l (%)	79.8	80.3	75.9	81.8	86.0

Table 2: Spine plots of variation in prevalence of Coronary Heart Disease and achievement against key Quality and Outcomes Framework indicators across current Hounslow GP practices. Data: QOF returns 2009/10. Expected numbers of individuals who have Coronary Heart Disease were derived from APHO Modelled estimates of prevalence of disease by PCT

Domain	Hounslow	London	Practices Lowest	Practices Average	Practices Highest
Prevalence (% of population)	2.5	2.2	1.3	2.5	7.8
Indirectly Standardised Rate per 10,000	254.8	234.3	91.4	179.1	323.3
Number of newly diagnosed Angina patients per 1000 population	290.8	307.0	46.5	296.5	1022.7
CHD 2 - Newly diagnosed angina patients referred onto specialist assessment (%)	93.4	94.6	17.4	94.8	100.0
CHD 5 - Blood pressure taken (%)	96.7	97.2	88.3	96.9	100.0
CHD 6 - Blood pressure is $\leq$ 150/90 (%)	89.6	89.3	76.1	90.4	100.0
CHD 7 - cholesterol measured (%)	92.4	92.3	83.0	92.7	100.0
CHD 8 - cholesterol measured at $\leq$ 5mmol/l (%)	79.8	80.3	65.7	80.6	100.0

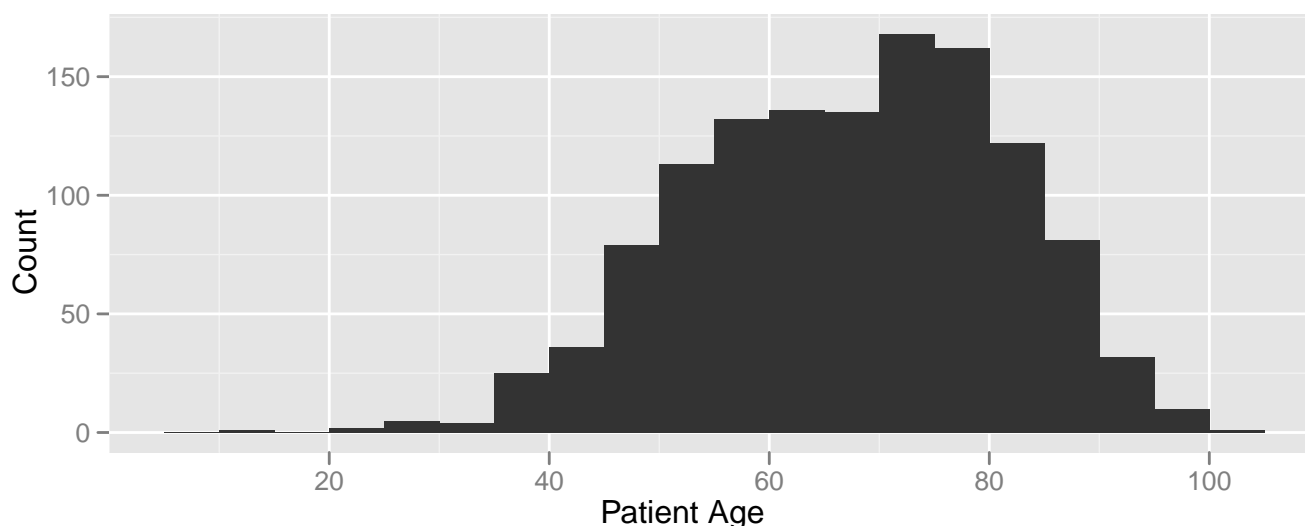
## 2 Secondary Care

### 2.1 Inpatients

Table 3: Coronary Heart Disease inpatients - emergency admissions where Coronary Heart Disease is the primary diagnosis<sup>1</sup>: April 2007 to March 2011. Data: Secondary Uses Service

Domain	2007/08	2008/09	2009/10	2010/11
Number of admissions	1107	941	942	842
% Emergency admissions	39	41.6	43.1	38.5
Number of emergency admissions	432	391	406	324
Number of admissions where the patient dies	16	26	10	20
%	3.7	6.6	2.5	6.2
Directly Standardised Rate of admissions per 100,000 population	226.6(± 23.3)	236.1(± 23.7)	242.6(± 23.9)	196.1(± 21.6)
Mean/Median Length of Stay	7.7/ 3	6.4/ 3	6.2/ 3	5.0/ 3
Min/Max Length of Stay	0/129	0/243	0/108	0/105
% Male	53.9	64.9	62.1	69.4
Mean/Median age of admitted patients	66.8/68.0	66.1/68.0	66.7/68.0	66.7/68.0
Min/Max age of admitted patients	21/100	13/ 95	29/ 98	25/ 93
No of records missing NHS numbers	21	13	17	17
No of individuals admitted	360	339	351	283
Mean/Median admissions per individual	1.1/1	1.1/1	1.1/1	1.1/1
Max no. of admissions per individuals	3	3	4	3
Total Costs £'000s	1126.4	1031.3	1442.3	1046.4

Figure 2: Age distribution of emergency admission inpatients with Coronary Heart Disease in Hounslow



<sup>1</sup>The following ICD-10 codes were used in defining an admission with a diagnosis of CHD - I20 - I25

## 2.2 Outpatients

Table 4: Spine plot of outpatient activity in Hounslow benchmarked against other PCTs in 2009/10. Data: NHS Comparators

Domain	Hounslow	London	England Lowest	England Average		England Highest
Standardised rate of outpatients attendances per 1000 population	37.2	46.5	2.2	30.6		92.8
Costs of outpatients attendances per 1000 population (£)	4838.6	6142.6	271.9	3956.5		12752.1
Standardised rate of outpatients first attendances per 1000 population	12.4	12.2	0.2	8.7		25.6
Costs of outpatients first attendances per 1000 population (£)	2801.6	3662.2	131.9	2250.2		8916.6
Ratio of follow up attendances to first attendances	1.4	1.3	0.5	1.6		29.7
Ratio of costs of outpatients follow up attendances to first attendances	0.7	0.6	0.2	0.8		14.2
% Discharged after first attendance	41.5	49.0	1.3	42.8		89.9

## 3 Prescribing for CHD: National

Table 5: Spine plots of prescribing cost of drugs prescribed for coronary heart disease per capita of PCT: National data 2009/10. Data: NHSBSA Prescription Services through NHS iView

Domain	Hounslow	London	England Lowest	England Average		England Highest
Costs of ACE inhibitors and Angiotensin-II receptor antagonists prescribed	6.30	5.87	4.00	6.98		11.63
Costs of Beta Adrenoreceptor blocking drugs prescribed	1.09	1.04	0.65	1.54		2.45
Costs of Anti-platelet and anti coagulants prescribed	3.44	2.99	1.98	4.04		6.38

## 4 Mortality

Figure 3: Trend in mortality due to Coronary Heart disease<sup>2</sup>: Directly standardised rates per 100,000 population, 95% confidence intervals shown in the width of the line. Data: Office for National Statistics Public Health Mortality Files; Population: Office for National Statistics Super Output Area mid-year population estimates for England and Wales

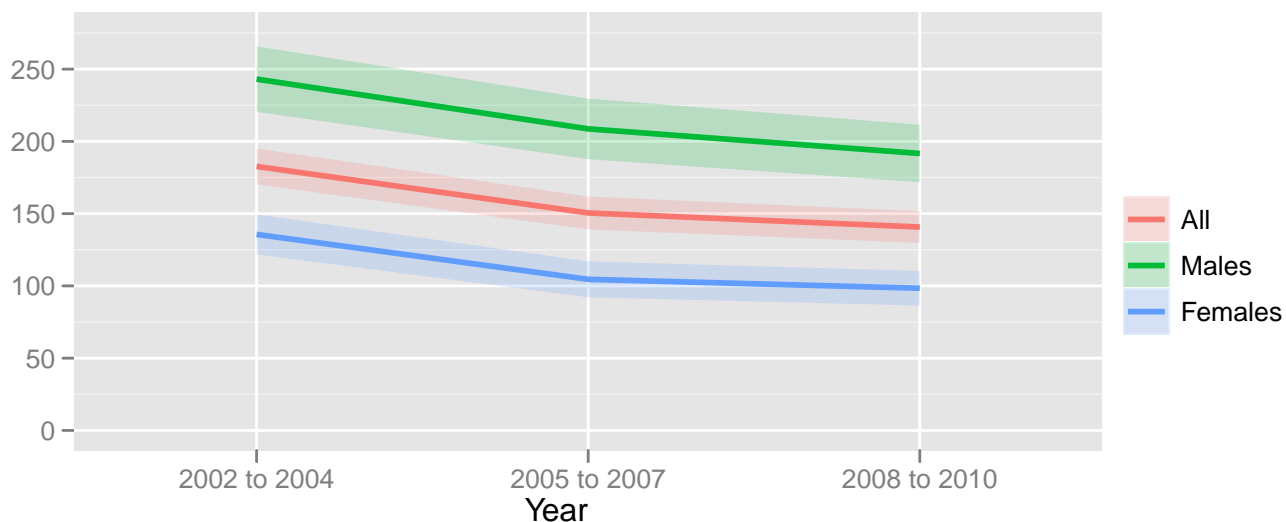
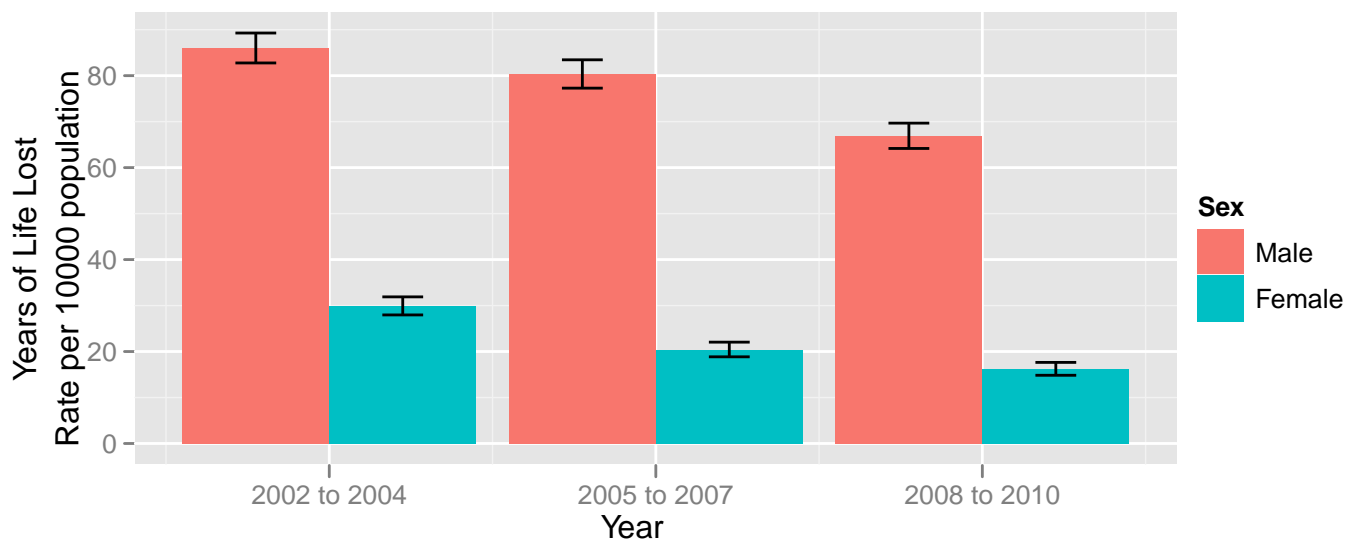


Figure 4: Trend in the Crude Years of Life Lost Rate due to Coronary Heart disease: Crude rate per 10,000 population for 2002-2004 to 2008-2010 pooled data. Data: Office for National Statistics Public Health Mortality Files; Population: Office for National Statistics Super Output Area mid-year population estimates for England and Wales



<sup>2</sup>The following ICD-10 codes were used in defining a mortality due to CHD - I20 - I25

Figure 5: Age distribution of individuals who have died because of Coronary Heart disease: 2002-2010 pooled data. Data: Office for National Statistics Public Health Mortality Files

